



ITECHROBOTICS

innovative solutions with high technology



FATİH MAH. ISPARTA-ANTALYA
ASFALTI BULV. NO:49/1
ISPARTA/ISPARTA



info@itechrobotics.com



www.itechrobotics.com

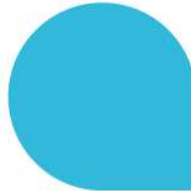


(0246) 237 02 44



ITECHROBOTICS

I-MOM



'2021

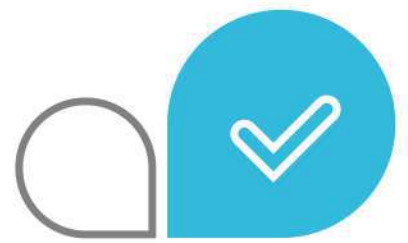


Autonomous
Calf Feeding Machine



**I-MOM
IS A
SYSTEM FOR
CALF FEEDING**

1



It's contributions to calf development

01

I-MOM feeds your calf several times a day with little portions in order to provide ideal growth.

02

I-MOM ensures to turn your calf into a healthy and productive cow by supporting its growth.

03

With the use of **I-MOM**, calves will grow in less time with sufficient and proper nutritions.

04

With **I-MOM** calf feeding robot, frequent feeding of calves is more in line with their natural nourishment behaviour.



**I-MOM CALF
FEEDING
SYSTEM IS AN
AUTOMOUS
SYSTEM**

ADVANTAGES

**Continious
working,
day and night**

**More hygienic
farms and barns**

**Saving
of
work force**

**Intense
nourishment**

Health control

**Focus
on wealthy
nourishment**

**Stable milk
concentration
and
temperature**

**Individual
nourishment**



Saving Time, Energy And Maintenance Cost

In a dairy production workshop, %10 of the work force is on the care of calves. A big part of this percentage consists of cleaning the buckets, farms/barns, preparing the milk/nutrient and the feeding of calves. With the I-MOM calf feeding system, this percentage will be significantly reduced, saving time and energy.



In the three month span, costs for calf feeding machine maintenance is equal to one-fourth of the cost of caring for a heifer. This %25 ratio means a serious saving in the maintenance costs.

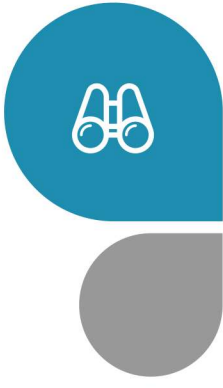
Paraller Feeding

You can feed four calves at the same time. There is no waiting at the feeding stations. That way the capacity of the machine increases and saves time. Stable food/milk temperature is delivered to all stations from the first sip. All transportation and hoses of the machine are included in the cleaning process. The food/milk consumed, including the remaining amounts, is recorded on a millimeter basis.



Milk Carriage Advantage

Let's suppose a workshop that delivers 200 liters of milk per day. This rate corresponds to approximately 73 tons of milk per year. For this reason, by using I-MOM milk transport system you will be saving on workload. It is possible to achieve higher efficiency with low energy loss.



I-MOM



01

When the calf approaches the **I-MOM**, a uniquely defined RFID is read for each calf.

02

The daily food right of the calf whose RFID is read is displayed on the **I-MOM** screen.



THE TIPS OF THE PACIFIERS ARE AUTOMATICALLY WASHED EVERY 5 CALVES.



03

If the calf is entitled to formula, I-MOM prepares the food and sends it to the pacifier. The lid of the pacifier opens and the calf begins to suckle.

04

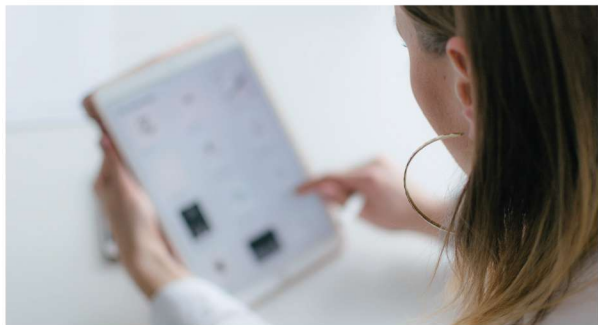
If the calf that has finished its food has not left the pacifier, I-MOM will prepare food again if it is entitled to formula.

05

If the calf, which has finished its food, lingers on the pacifier even though its daily right is full, the pacifier lid starts to close slowly.

**EVERY NIGHT, THE SYSTEM
TURN OFF AND IS
AUTOMATICALLY WASHED WITH
60° WATER WITH ACIDIC AND BASIC
FOR TWO HOURS.**

**ALL PARTS CARRYING
FOOD AND MILK IS
PROTECTED AGAINST
AND INSECTS.**



Animal Health At A Glance

I-MOM knows very well the individual daily requirements of your calves. Each calf can receive the right amount in a stable manner. You can track how often and how much food/milk your animals drink. You can save all the relevant information and change it at any time. If your calf does not drink its total right, you can easily see the remaining amount. In this case, I-MOM will give a warning. This way, you can easily intervene in the situation.



You can check the general status of your herd with a single button on the screen. In this way, you can control your animals that need to be observed. You can get an overview of the herd. That way, you can get an overview of the health, nutritional status and location of the animals. The food consumed is always on display clearly.

Easy Access

It is very easy to access information with the touch screen integrated into the system. In addition, access to information will be easier thanks to easy connection to a computer, smartphone or tablet. You can use all the features of I-MOM with easy connection. Thanks to the SMS feature, you can have information about the status of the system with the SMS sent to your mobile phone.

Buzađı Besleme

Kontrol Paneli

Kontrol

RFID:

Toplam: 0L

Tüketim: 0L

Kalan hak: 0L

Bilgi

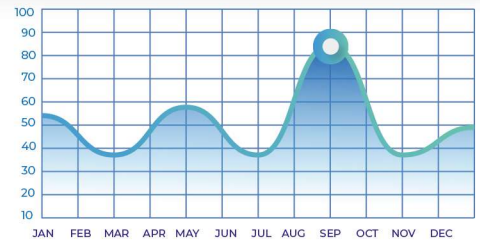
Istasyon-1 Bilgi Paneli

Bilgi

Istasyon-2 Bilgi Paneli

Yardım & Destek

Feeding with Touch Screen



Clear and simple interfaces; The easy adjustment of the nutrition chart allows you to feed your calves individually and your calf care to be effective and beneficial. The screen display always provides a quick overview of when your calves are not feeding/milking or when they need support. Create as many feeding charts as you can and do so easily via the touchscreen. With the graphics you will prepare, you can make daily food/milk amount, the amount of meals and the number of meals, feeding days, weaning, alarm system, nutrient concentration.

| Touch screen size: **15,6"**

| Dimensions: **122cm*60cm*65cm**

| Disinfectant reservoir: **2*5 LT**

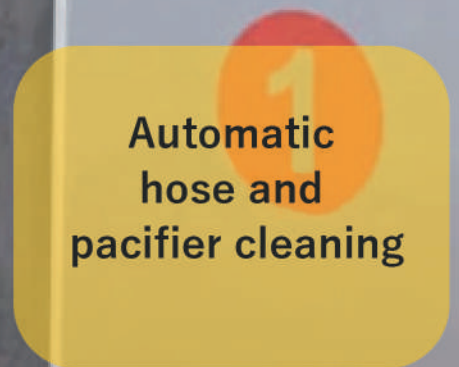
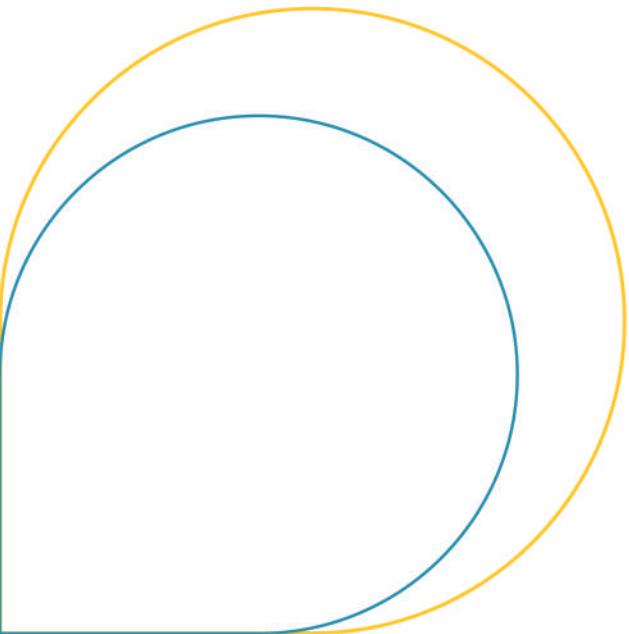
| Feed reservoir: **30 KG**


| Water temperature: **39° Fixed**

| Mixer reservoir: **1 LT**

| Water tank: **12,5 L**

| Calve capacity: **2-4**





**Suitable
for
formula and milk
combination.**

**Has a software that
gives information on
nutrients
and
behaviors of calves.**

**Bacteria growth
is inhibited by
washing and rinsing
with suitable
cleaning materials
throughout the day.**

**Available feeding
station
with hygiene box,
reader and pacifier unit**

**Cross contamination
between calves
is
prevented with
the highly
dirt-repellent spou**